

# PP-H

## 产品目录

product catalogue



沧州华祥塑业有限公司

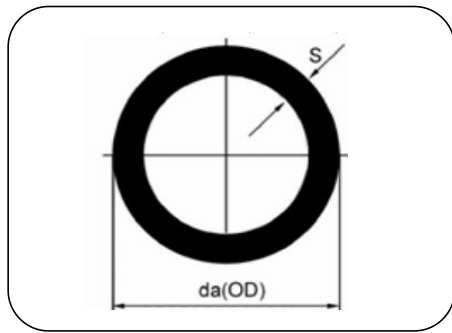
地址：河北省沧州市盐山县

电话：13903170785 0317-5301871

网址：<http://www.czhsy.com>

目录	页码
管 道	3
承插焊接管件	4-12
对焊管件	13-23
球 阀	24
法兰系列	25-30

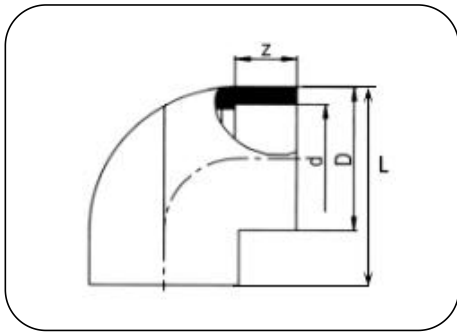
# 管道



- PP-H 管材
- 挤出成型
- 4 米或 5 米
- PP-H grey
- extruded moulded
- 4m or 5m

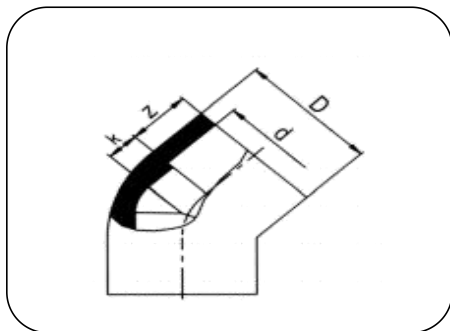
尺寸	公称壁厚, S, mm					
	公称压力, PN					
Dimension	2.5	3.2	4.0	6.0	10	16
	标准尺寸比					
	SDR41	SDR33	SDR26	SDR17.6	SDR11	SDR7.4
20	-	-	-	-	1.9	2.8
25	-	-	-	-	2.3	3.5
32	-	-	-	2.0	2.9	4.4
40	-	-	1.8	2.3	3.7	5.5
50	-	1.8	2.0	2.9	4.6	6.9
63	1.8	2.0	2.5	3.6	5.8	8.6
75	1.9	2.3	2.9	4.3	6.8	10.3
90	2.2	2.8	3.5	5.1	8.2	12.3
110	2.7	3.4	4.2	6.3	10.0	15.1
125	3.1	3.9	4.8	7.1	11.4	17.1
140	3.5	4.3	5.4	8.0	12.7	19.2
160	4.0	4.9	6.2	9.1	14.6	21.9
180	4.4	5.5	6.9	10.2	16.4	-
200	4.9	6.2	7.7	11.4	18.2	-
225	5.5	6.9	8.6	12.8	20.5	-
250	6.2	7.7	9.6	14.2	22.7	-
280	6.9	8.6	10.9	15.9	25.4	-
315	7.7	9.7	12.3	17.9	28.6	-
355	8.7	10.9	13.8	20.1	32.2	-
400	9.8	12.3	15.3	22.7	36.3	-

## 承插焊接管件



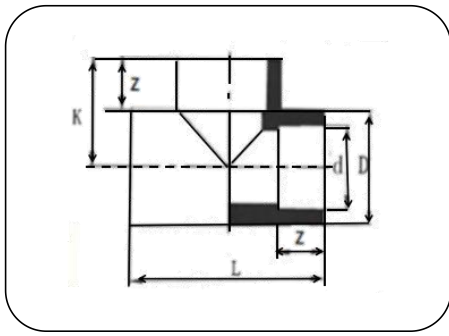
- 90° 弯头 I
- 注塑成型
- 承插焊接
- PP-H 灰色
- Elbow 90° I
- Injection moulded
- Socket welding
- PP-H gery

尺寸 Dimension	公称压力 PN	d mm	D mm	L mm	Z mm
20	10	19.2	27	41	14
25	10	24.2	34	50	17
32	10	31.1	40	58	17
40	10	39.0	50	70	20
50	10	48.9	62	83	23
63	10	61.9	79	99	26
75	10	74.3	90	114	32
90	10	89.3	112	138	35
110	10	109.4	130	160	42



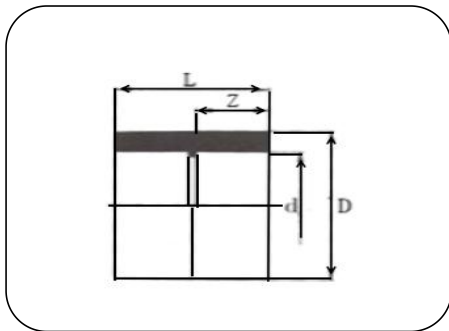
- 45° 弯头 I
- 注塑成型
- 承插焊接
- PP-H 灰色
- Elbow 45° I
- Injection moulded
- Socket welding
- PP-H gery

尺寸 Dimension	公称压力 PN	d mm	D mm	K mm	Z mm
20	10	19.2	29	12	15
25	10	24.2	34	15	17
32	10	31.1	42	17	18
40	10	39.0	51	22	21
50	10	48.9	62	24	23
63	10	61.9	80	30	28
75	10	74.3	91	38	31
90	10	89.3	110	45	36
110	10	109.4	130	57	42



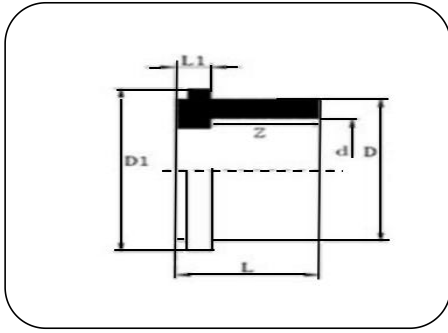
- 三通 I
- Tee I
- 注塑成型
- Injection moulded
- 承插焊接
- Socket welding
- PP-H 灰色
- PP-H gery

尺寸 Dimension	公称压力 PN	d mm	D mm	L mm	K mm	Z mm
20	10	19.2	28	60	30	17
25	10	24.2	35	67	33	17
32	10	31.1	43	79	39	19
40	10	39.0	51	93	46	21
50	10	48.9	64	107	52	23
63	10	61.9	80	123	63	29
75	10	74.3	91	153	76	34
90	10	89.3	110	177	88	35
110	10	109.4	131	206	100	42



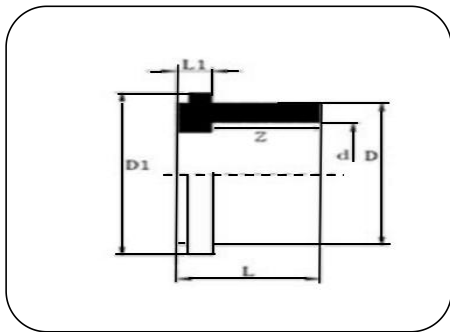
- 直接 I
- Socket I
- 注塑成型
- Injection moulded
- 承插焊接
- Socket welding
- PP-H 灰色
- PP-H gery

尺寸 Dimension	公称压力 PN	d mm	D mm	L mm	Z mm
20	10	19.2	29	35	15
25	10	24.2	34	38	17
32	10	31.1	42	42	18
40	10	39.0	52	47	21
50	10	48.9	64	52	23
63	10	61.9	80	61	28
75	10	74.3	91	71	32
90	10	89.3	113	77	35
110	10	109.4	129	89	42



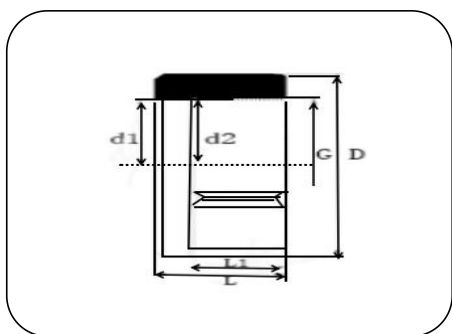
- 活接端 I
- 注塑成型
- 承插焊接
- PP-H 灰色
- Union end I
- Injection moulded
- Socket welding
- PP-H gery

尺寸 Dimension	公称压力 PN	d mm	D mm	D1 mm	L mm	L1 mm	Z mm
20	10	19.2	27	34	21	4	16
25	10	24.2	35	44	23	4	17
32	10	31.1	41	49	24	4	19
40	10	39.0	52	59	28	5	21
50	10	48.9	60	69	31	5	24
63	10	61.9	75	87	36	6	28



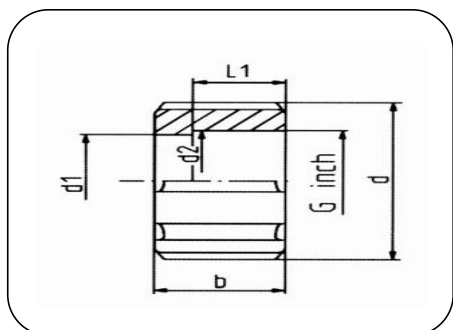
- 活接端 II
- 注塑成型
- 承插焊接
- PP-H 灰色
- Union end II
- Injection moulded
- Socket welding
- PP-H gery

尺寸 Dimension	公称压力 PN	d mm	D mm	D1 mm	L mm	L1 mm	Z mm
20	10	19.2	27	30	19	5	15
25	10	24.2	36	39	21	5	18
32	10	31.1	41	45	23	6	19
40	10	39.0	52	56	25	6	22
50	10	48.9	58	62	28	7	24
63	10	61.9	73	78	32	7	29



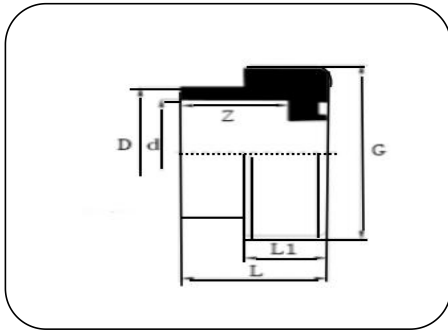
- 活接螺母 I
- G 螺纹
- 注塑成型
- 承插焊接
- PP-H 灰色
- Union nut I
- G tread
- Injection moulded
- Socket welding
- PP-H gery

尺寸 Dimension	公称压力 PN	D mm	d1 mm	d2 mm	L1 mm	L mm	G inch
20	10	47	28	37	19	24	1 1/4
25	10	57	36	45	19	24	1 1/2
32	10	70	42	51	24	30	1 3/4
40	10	77	53	62	23	30	2 1/4
50	10	96	61	78	34	34	2 3/4
63	10	110	76	94	30	40	3 1/2



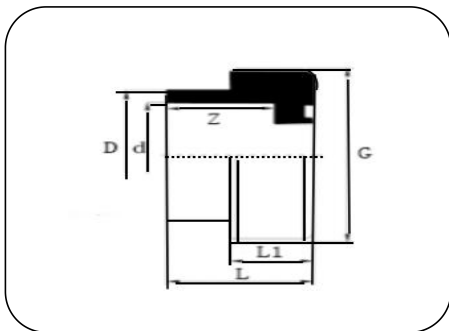
- 活接螺母 II
- G 螺纹
- 注塑成型
- 承插焊接
- PP-H 灰色
- Union nut II
- G tread
- Injection moulded
- Socket welding
- PP-H gery

尺寸 Dimension	公称压力 PN	D mm	d1 mm	d2 mm	L1 mm	b mm	G inch
20	10	42	22	30	17	22	1
25	10	53	32	39	18	24	1 1/4
32	10	61	38	45	19	26	1 1/2
40	10	72	48	57	22	28	2
50	10	82	56	62	25	33	2 1/4
63	10	100	70	78	27	35	2 3/4



- 活接套筒 I
- G 螺纹
- 注塑成型
- 承插焊接
- PP-H 灰色
- Union bush I
- G tread
- Injection moulded
- Socket welding
- PP-H gery

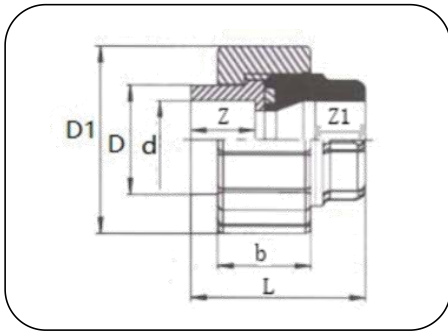
尺寸 Dimension	公称压力 PN	d mm	D mm	L mm	L1 mm	Z mm	G inch
20	10	19.2	27	23	14	17	1 1/4
25	10	24.2	35	28	16	21	1 1/2
32	10	31.1	41	30	17	21	1 3/4
40	10	39.0	52	31	18	22	2 1/4
50	10	48.9	60	36	20	24	2 3/4
63	10	61.9	75	42	23	29	3 1/2



- 活接套筒 II
- G 螺纹
- 注塑成型
- 承插焊接
- PP-H 灰色
- Union bush II
- G tread
- Injection moulded
- Socket welding
- PP-H gery

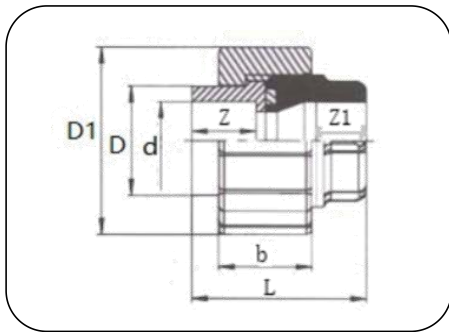
尺寸 Dimension	公称压力 PN	d mm	D mm	L mm	L1 mm	Z mm	G inch
20	10	19.2	26	26	14	15	1
25	10	24.2	32	28	15	18	1 1/4
32	10	31.1	40	29	16	19	1 1/2
40	10	39.0	49	34	18	21	2
50	10	48.9	60	40	22	24	2 1/4
63	10	61.9	75	48	24	29	2 3/4





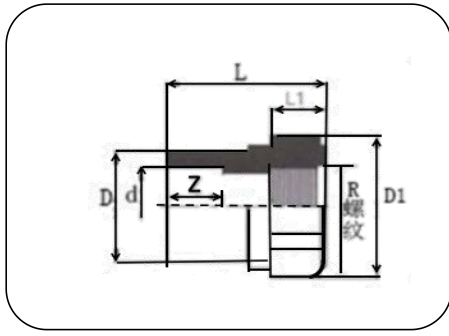
- 活接 I
- EPDM-密封
- 注塑成型
- 承插焊接
- PP-H 灰色
- Union Type I
- EPDM-sealing
- Injection moulded
- Socket welding
- PP-H gery

尺寸 Dimension	公称压力 PN	d mm	D mm	D1 mm	b mm	L mm	Z mm	Z1 mm
20	10	19.2	27	47	24	45	16	17
25	10	24.2	35	57	25	50	17	21
32	10	31.1	41	66	30	54	19	21
40	10	39.0	52	78	31	60	21	22
50	10	48.9	60	92	34	67	24	24
63	10	61.9	75	109	39	78	28	29



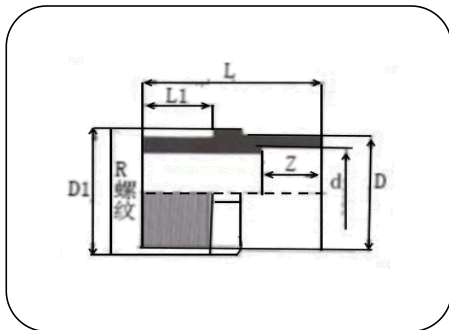
- 活接 II
- EPDM-密封
- 注塑成型
- 承插焊接
- PP-H 灰色
- Union Type II
- EPDM-sealing
- Injection moulded
- Socket welding
- PP-H gery

尺寸 Dimension	公称压力 PN	d mm	D mm	D1 mm	b mm	L mm	Z mm	Z1 mm
20	10	19.2	27	43	23	45	16	16
25	10	24.2	35	53	24	50	18	17
32	10	31.1	41	61	27	52	19	19
40	10	39.0	52	74	29	60	22	21
50	10	48.9	58	82	33	68	24	24
63	10	61.9	73	102	35	80	28	29



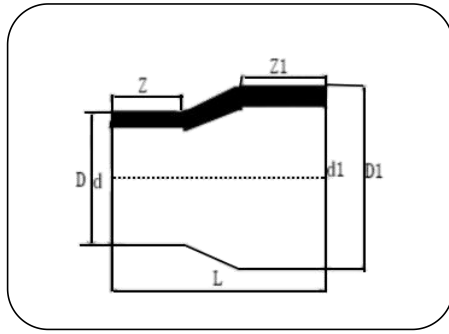
- 内螺纹管接头 I
- 注塑成型或机加工
- 承插焊接
- PP-H 灰色
- Adaptor Female Thread I
- Injection moulded or Process molding
- Socket welding
- PP-H gery

尺寸 Dimension	公称压力 PN	d mm	D mm	L mm	L1 mm	SW mm	Z mm	R inch
20	10	19.2	29	44	16	32	16	1/2
25	10	24.2	34	50	17	40	17	3/4
32	10	31.1	42	56	18	45	17	1
40	10	39	51	61	25	54	20	1 1/4
50	10	48.9	62	67	26	69	23	1 1/2
63	10	61.9	79	73	30	84	28	2



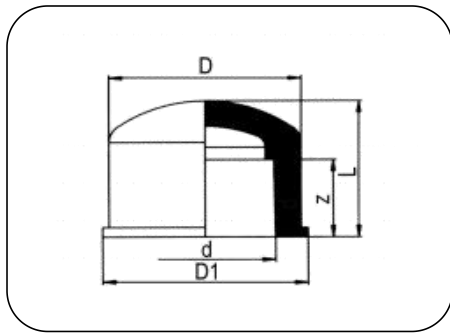
- 外螺纹管接头 I
- 注塑成型或机加工
- 承插焊接
- PP-H 灰色
- Adaptor Male Thread I
- Injection moulded or Process molding
- Socket welding
- PP-H gery

尺寸 Dimension	公称压力 PN	d mm	D mm	L mm	L1 mm	SW mm	Z mm	R inch
20	10	19.2	25	48	17	26	16	1/2
25	10	24.2	32	61	23	34	18	3/4
32	10	31.1	40	65	26	40	21	1
40	10	39.0	49	73	29	51	29	1 1/4
50	10	48.9	63	77	30	70	22	1 1/2
63	10	61.9	80	82	31	84	28	2



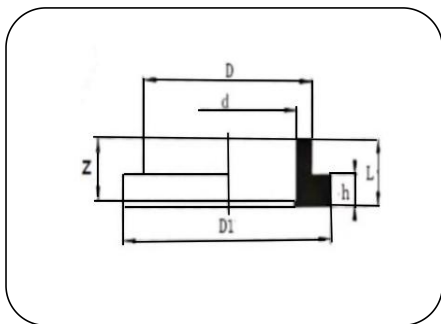
- 同心变径 I
- 注塑成型
- 承插焊接
- PP-H 灰色
- Reducer concentric I
- Injection moulded
- Socket welding
- PP-H gery

尺寸 Dimension	公称压力 PN	d mm	D mm	d1 mm	D1 mm	L mm	Z mm	Z1 mm
25/20	10	19.2	29	24.2	34	40	15	18
32/20	10	19.2	29	31.1	42	44	15	20
32/25	10	24.2	34	31.1	42	44	16	19
40/20	10	19.2	29	39.0	52	49	16	21
40/25	10	24.2	34	39.0	52	49	18	21
40/32	10	31.1	42	39.0	52	49	20	21
50/20	10	19.2	29	48.9	63	55	16	30
50/25	10	24.2	34	48.9	63	55	17	24
50/32	10	31.1	42	48.9	63	55	17	22
50/40	10	39.0	52	48.9	63	55	25	24
63/25	10	24.2	34	61.9	80	64	18	25
63/32	10	31.1	42	61.9	80	64	20	27
63/40	10	39.0	52	61.9	80	63	20	28
63/50	10	48.9	63	61.9	80	63	24	29
75/63	10	61.9	80	74.3	91	63	27	30
90/63	10	61.9	80	89.3	110	85	27	35
90/75	10	74.3	91	89.3	110	86	32	36
110/63	10	61.9	80	109.4	130	86	29	42
110/90	10	89.3	110	109.4	130	86	42	42



- 管帽 I
- 注塑成型
- 承插焊接
- PP-H 灰色
- Eed Cap I
- Injection moulded
- Socket welding
- PP-H gery

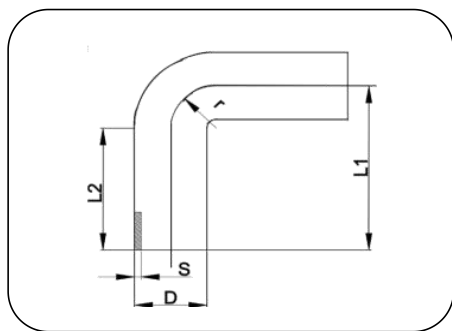
尺寸 Dimension	公称压力 PN	d mm	D mm	D1 mm	L mm	Z mm
20	10	19.2	31	28	26	15
25	10	24.2	35	34	29	17
32	10	31.1	45	43	34	19
40	10	39.0	56	52	37	21
50	10	48.9	68	63	46	24
63	10	61.9	85	79	57	27
75	10	74.3	96	91	64	33
90	10	89.3	117	109	75	36
110	10	109.4	137	130	90	43



- 法兰转接头 I
- 注塑成型
- 承插焊接
- PP-H 灰色
- Stub Flange I
- Injection moulded
- Socket welding
- PP-H gery

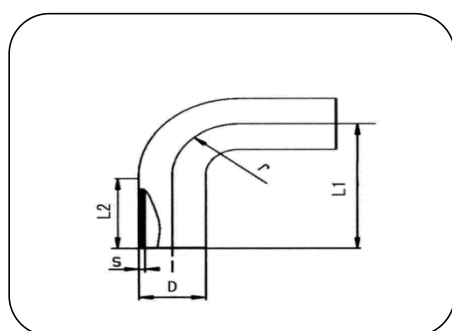
尺寸 Dimension	公称压力 PN	d mm	D mm	D1 mm	L mm	h mm	Z mm
20	10	19.2	27	45	23	8	15
25	10	24.2	32	57	23	9	16
32	10	31.1	41	68	27	9	19
40	10	39.0	49	77	27	9	19
50	10	48.9	60	88	32	10	25
63	10	61.9	75	100	34	11	27
75	10	74.3	89	119	40	14	31
90	10	89.3	108	125	42	13	36
110	10	109.4	130	150	49	14	43

## 对焊管件



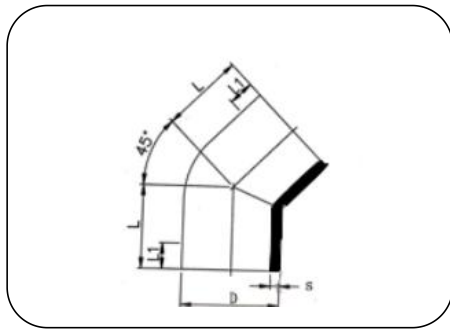
- 90° 弯头 I
- 注塑成型
- 对 焊
- PP-H 灰色
- Elbow 90° I
- Injection moulded
- Butt
- PP-H gery

尺寸 Dimension	公称压力 PN	D mm	S mm	L1 mm	L2 mm	r mm
20	10	20	1.9	51	31	20
25	10	25	2.3	56	31	25
32	10	32	2.9	64	44	32
40	10	40	3.7	72	47	40
50	10	50	4.6	84	52	50
63	10	63	5.8	95	60	63
75	10	75	6.8	96	28	75
90	10	90	8.2	116	34	90
110	10	110	10	138	34	110
140	10	140	12.7	155	80	140
160	10	160	14.6	175	85	160
225	10	225	20.5	247	110	225
250	10	250	22.7	235	100	250
280	10	280	25.4	255	108	280
315	10	315	28.6	257	100	315
400	10	400	36.3	325	100	400



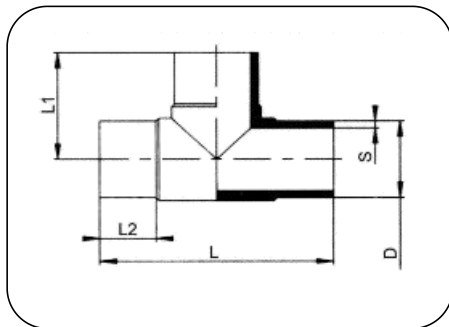
- 90° 弯头 II
- 注塑成型
- 对 焊
- PP-H 灰色
- Elbow 90° II
- Injection moulded
- Butt
- PP-H gery

尺寸 Dimension	公称压力 PN	D mm	S mm	L1 mm	L2 mm	r mm
20	10	20	1.9	57	45	20
25	10	25	2.3	67	51	25
32	10	32	2.9	78	58	32
40	10	40	3.7	91	67	40
50	10	50	4.6	106	75	50
63	10	63	5.8	127	89	63



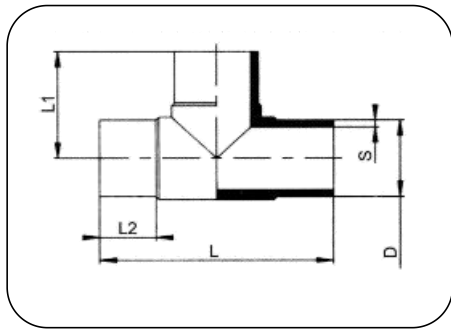
- 45° 弯头 I
- 注塑成型
- 对 焊
- PP-H 灰色
- Elbow 45° I
- Injection moulded
- Butt
- PP-H gery

尺寸 Dimension	公称压力 PN	D mm	S mm	L mm	L1 mm
20	10	20	1.9	32	24
25	10	25	2.3	34	25
32	10	32	2.9	36	25
40	10	40	3.7	39	25
50	10	50	4.6	42	26
63	10	63	5.8	47	29
75	10	75	6.8	49	29
90	10	90	8.2	57	34



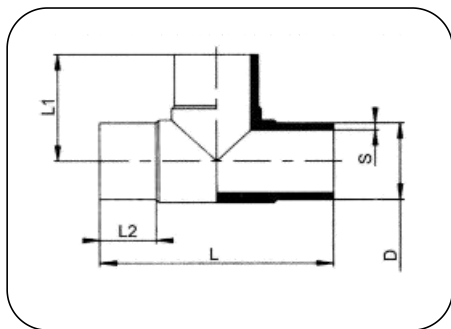
- 三通 I
- 注塑成型
- 对 焊
- PP-H 灰色
- Tee I
- Injection moulded
- Butt
- PP-H gery

尺寸 Dimension	公称压力 PN	D mm	S mm	L mm	L1 mm	L2 mm
20	10	20	1.9	71	35	14
25	10	25	2.3	80	40	14
32	10	32	2.9	89	46	16
40	10	40	3.7	100	50	17
50	10	50	4.6	120	61	22
63	10	63	5.8	148	74	27
75	10	75	6.8	233	117	70
90	10	90	8.2	279	142	78
110	10	110	10	296	154	84



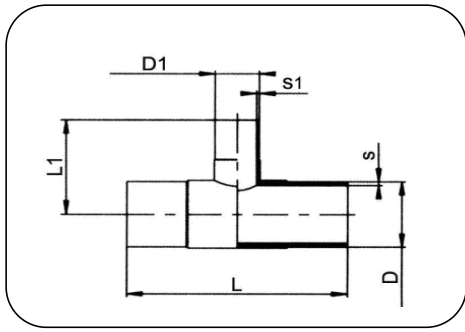
- 三通 I
- 注塑成型
- 对 焊
- PP-H 灰色
- Tee I
- Injection moulded
- Butt
- PP-H gery

尺寸 Dimension	公称压力 PN	D mm	S mm	L mm	L1 mm	L2 mm
140	10	140	12.7	320	160	80
160	10	160	14.6	348	176	85
225	10	225	20.5	400	200	85
250	10	250	22.7	430	230	110
280	10	280	25.4	535	267	110
315	10	315	28.6	555	275	110
400	10	400	36.3	600	320	110



- 三通 II
- 注塑成型
- 对 焊
- PP-H 灰色
- Tee II
- Injection moulded
- Butt
- PP-H gery

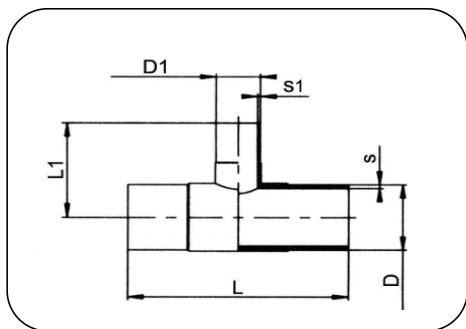
尺寸 Dimension	公称压力 PN	D mm	S mm	L mm	L1 mm	L2 mm
20	10	20	1.9	75	37	24
25	10	25	2.3	82	41	25
32	10	32	2.9	93	46	30
40	10	40	3.7	100	50	25
50	10	50	4.6	114	57	25
63	10	63	5.8	129	64	25
75	10	75	6.8	150	74	28
90	10	90	8.2	180	90	34



- 变径三通 I
- 注塑成型
- 对焊
- PP-H 灰色
- Tee reduced I
- Injection moulded
- Butt
- PP-H gery

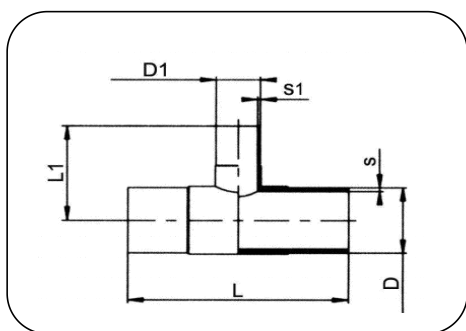
尺寸 Dimesion	公称压力 PN	D mm	D1 mm	S mm	S1 mm	L mm	L1 mm
63/40	10	63	40	5.8	3.7	129	71
75/50	10	75	50	6.8	4.6	201	95
75/63	10	75	63	6.8	5.8	223	108
90/32	10	90	32	8.2	2.9	164	85
90/50	10	90	50	8.2	4.6	213	111
90/63	10	90	63	8.2	5.8	213	113
90/75	10	90	75	8.2	6.8	240	122
110/63	10	110	63	10	5.8	228	137
110/75	10	110	75	10	6.8	256	135
110/90	10	110	90	10	8.2	257	135
125/90	10	125	90	11.4	8.2	305	150
125/110	10	125	110	11.4	10	305	150
140/90	10	140	90	12.7	8.2	253	155
140/110	10	140	110	12.7	10	253	160
140/125	10	140	125	12.7	11.4	320	160
160/90	10	160	90	14.6	8.2	272	170
160/110	10	160	110	14.6	10	294	170
200/90	10	200	90	18.2	8.2	250	195
200/110	10	200	110	18.2	10	250	195
200/160	10	200	160	18.2	14.6	285	200
225/90	10	225	90	20.5	8.2	285	230
225/110	10	225	110	20.5	10	335	230
225/160	10	225	160	20.5	14.6	355	242
225/200	10	225	200	20.5	18.2	400	242
250/110	10	250	110	22.7	10	285	228
250/160	10	250	160	22.7	14.6	342	228
250/200	10	250	200	22.7	18.2	380	228
280/110	10	280	110	25.4	10	300	240
280/200	10	280	200	25.4	18.2	387	250
280/250	10	280	250	25.4	22.7	530	260
315/110	10	315	110	28.6	10	280	275
315/160	10	315	160	28.6	14.6	336	275
315/200	10	315	200	28.6	18.2	378	275
315/250	10	315	250	28.6	22.7	428	275





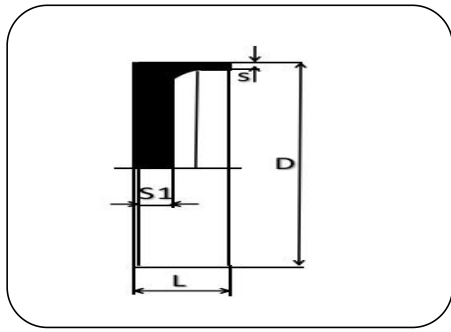
- 变径三通 I
- 注塑成型
- 对 焊
- PP-H 灰色
- Tee reduced I
- Injection moulded
- Butt
- PP-H gery

尺寸 Dimesion	公称压力 PN	D mm	D1 mm	S mm	S1 mm	L mm	L1 mm
355/110	10	355	110	32.2	10	310	275
355/200	10	355	200	32.2	18.2	400	287
355/250	10	355	250	32.2	22.7	450	287
355/315	10	355	315	32.2	28.6	515	287
400/110	10	400	110	36.3	10	310	310
400/160	10	400	160	36.3	14.6	360	310
400/200	10	400	200	36.3	18.2	400	310
400/250	10	400	250	36.3	22.7	450	310
400/315	10	400	315	36.3	28.6	515	310
400/355	10	400	355	36.3	32.2	555	310



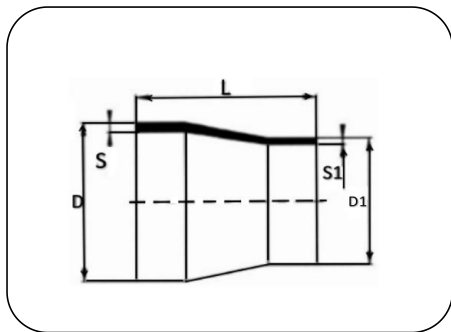
- 变径三通 II
- 注塑成型
- 对 焊
- PP-H 灰色
- Tee reduced II
- Injection moulded
- Butt
- PP-H gery

尺寸 Dimesion	公称压力 PN	D mm	D1 mm	S mm	S1 mm	L mm	L1 mm
63/40	10	63	40	5.8	3.7	129	71



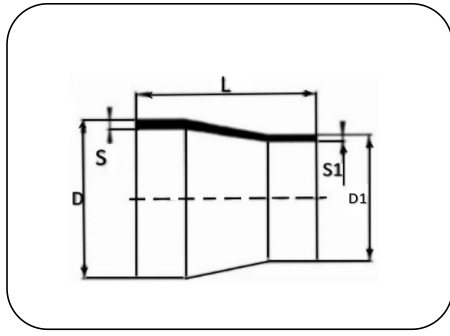
- 管帽 I
- 机加工
- 对焊
- PP-H 灰色
- End Cap I
- Machined
- Butt
- PP-H gery

尺寸 Dimension	公称压力 PN	D mm	L mm	S mm	S1 mm
20	10	20	25	1.9	10
25	10	25	25	2.3	10
32	10	32	25	2.9	10
40	10	40	25	3.7	14
50	10	50	25	4.6	15
63	10	63	25	5.8	18
75	10	75	29	6.8	20
90	10	90	30	8.2	20
110	10	110	30	10	20



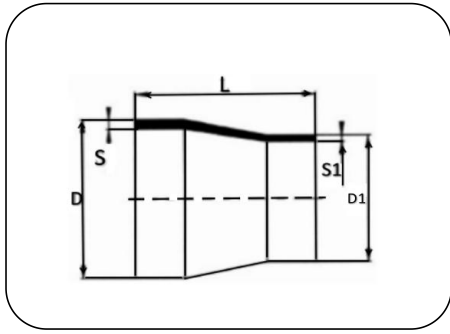
- 同心变径 I
- 注塑成型或机加工
- 对焊
- PP-H 灰色
- Reducer concentric I
- Injection moulded or Process moulded
- Butt
- PP-H gery

尺寸 Dimension	公称压力 PN	L mm	D mm	D1 mm	S mm	S1 mm
25/20	10	50	25	20	2.3	1.9
32/20	10	50	32	20	2.9	1.9
32/25	10	50	32	25	2.9	2.3
40/20	10	58	40	20	3.7	1.9
40/25	10	55	40	25	3.7	2.3
40/32	10	55	40	32	3.7	2.9
50/25	10	60	50	25	4.6	2.3
50/32	10	60	50	32	4.6	2.9
50/40	10	60	50	40	4.6	3.7
63/32	10	65	63	32	5.8	2.9
63/40	10	65	63	40	5.8	3.7
63/50	10	65	63	50	5.8	4.6
75/40	10	68	75	40	6.8	3.7



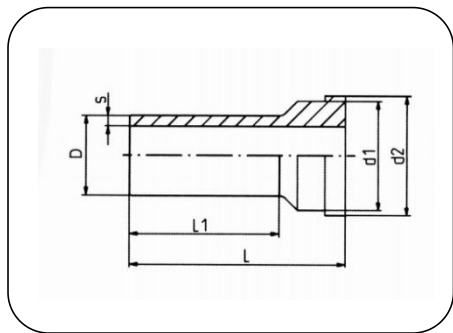
- 同心变径 I
- 注塑成型或机加工
- 对 焊
- PP-H 灰色
- Reducer concentric I
- Injection moulded or Process moulded
- Butt
- PP-H gery

尺寸 Dimesion	公称压力 PN	L mm	D mm	D1 mm	S mm	S1 mm
75/50	10	65	75	50	6.8	4.6
75/63	10	65	75	63	6.8	5.8
90/50	10	75	90	50	8.2	4.6
90/63	10	75	90	63	8.2	5.8
90/75	10	75	90	75	8.2	6.8
110/50	10	85	110	50	10	4.6
110/63	10	90	110	63	10	5.8
110/75	10	90	110	75	10	6.8
110/90	10	90	110	90	10	8.2
125/110	10	183	125	110	11.4	10
140/110	10	180	140	110	12.7	10
140/125	10	180	140	125	12.7	11.4
160/110	10	214	160	110	14.6	10.0
160/140	10	214	160	140	14.6	12.7
200/110	10	218	200	110	18.2	10
200/140	10	218	200	140	18.2	12.7
200/160	10	218	200	160	18.2	14.6
225/110	10	218	225	110	20.5	10
225/140	10	218	225	140	20.5	12.7
225/160	10	218	225	160	20.5	14.6
280/140	10	245	280	140	25.4	12.7
280/160	10	245	280	160	25.4	14.6
280/225	10	245	280	225	25.4	20.5
280/250	10	245	280	250	25.4	22.7
315/110	10	235	315	110	28.6	10
315/160	10	235	315	160	28.6	14.6
315/225	10	240	315	225	28.6	20.5
315/280	10	240	315	280	28.6	25.4



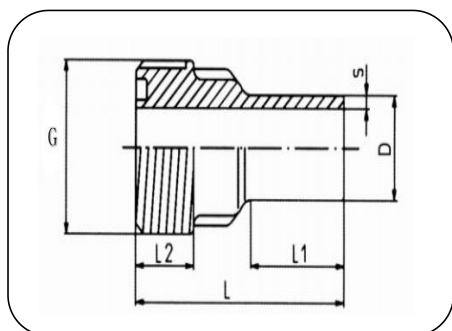
- 同心变径 II
- 注塑成型或机加工
- 对 焊
- PP-H 灰色
- Reducer concentric II
- Injection moulded or Process moulded
- Butt
- PP-H gery

尺寸 Dimesion	公称压力 PN	L mm	D mm	D1 mm	S mm	S1 mm
25/20	10	50	25	20	2.3	1.9
32/20	10	50	32	20	2.9	1.9
32/25	10	50	32	25	2.9	2.3
40/20	10	58	40	20	3.7	1.9
40/25	10	55	40	25	3.7	2.3
40/32	10	55	40	32	3.7	2.9
50/20	10	60	50	20	4.6	1.9
50/25	10	60	50	25	4.6	2.3
50/32	10	60	50	32	4.6	2.9
50/40	10	60	50	40	4.6	3.7
63/25	10	55	63	25	5.8	2.3
63/32	10	65	63	32	5.8	2.9
63/40	10	65	63	40	5.8	3.7
63/50	10	65	63	50	5.8	4.6
75/50	10	65	75	50	6.8	4.6
75/63	10	65	75	63	6.8	5.8
90/50	10	75	90	50	8.2	4.6
90/63	10	75	90	63	8.2	5.8
90/75	10	75	90	75	8.2	6.8
110/63	10	90	110	63	10	5.8
110/75	10	90	110	75	10	6.8
110/90	10	90	110	90	10	8.2



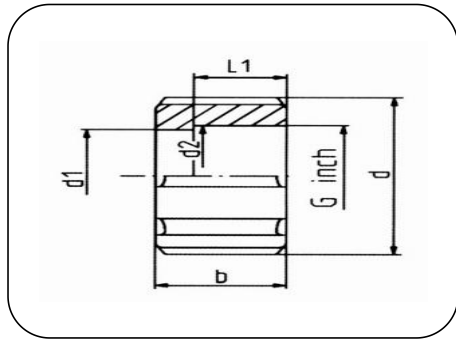
- 活接端 I
- 注塑成型
- 对 焊
- PP-H 灰色
- Union end I
- Injection moulded
- Butt
- PP-H gery

尺寸 Dimension	公称压力 PN	D mm	S mm	L mm	L1 mm	d1 mm	d2 mm
20	10	20	1.9	52	37	23	29
25	10	25	2.3	56	38	31	38
32	10	32	2.9	59	40	37	44
40	10	40	3.7	63	41	47	55
50	10	50	4.6	66	44	55	62
63	10	63	5.8	69	45	69	78



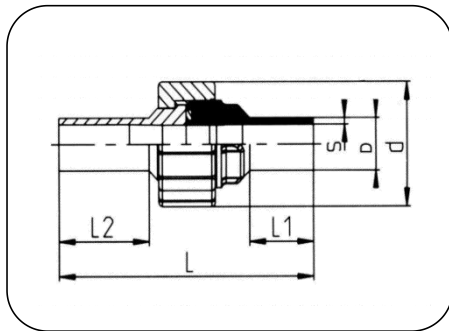
- 活接套筒 I
- G 螺纹
- 注塑成型
- 对 焊
- PP-H 灰色
- Union bush I
- G thread
- Injection moulded
- Butt
- PP-H gery

尺寸 Dimension	公称压力 PN	D mm	S mm	L mm	L1 mm	L2 mm	G inch
20	10	20	1.9	52	25	13	1
25	10	25	2.3	57	26	14	1 1/4
32	10	32	2.9	60	25	14	1 1/2
40	10	40	3.7	60	24	14	2
50	10	50	4.6	65	24	19	2 1/4
63	10	63	5.8	68	25	19	2 3/4



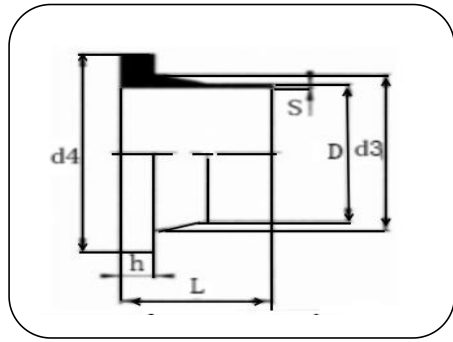
- 活接螺母 I
- Union nut I
- G 螺纹
- G thread
- 注塑成型
- Injection moulded
- PP-H 灰色
- PP-H gery

尺寸 Dimension	公称压力 PN	D mm	d1 mm	d2 mm	L1 mm	b mm	G inch
20	10	42	22	30	17	22	1
25	10	53	32	39	18	24	1 1/4
32	10	61	38	45	19	26	1 1/2
40	10	72	48	57	22	28	2
50	10	82	56	62	25	33	2 1/4
63	10	100	70	78	27	35	2 3/4



- 活接 I
- Union Type I
- EPDM 密封
- EPDM-sealing
- 注塑成型
- Injection moulded
- 对 焊
- Butt
- PP-H 灰色
- PP-H gery

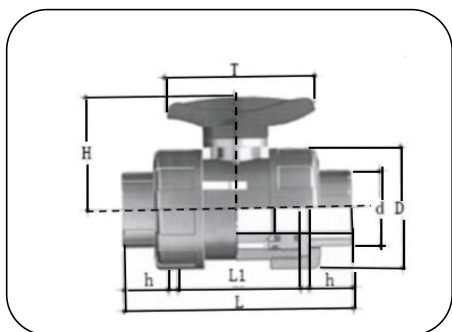
尺寸 Dimension	公称压力 PN	D mm	d mm	S mm	L mm	L1 mm	L2 mm
20	10	20	43	1.9	106	25	37
25	10	25	52	2.3	113	26	38
32	10	32	60	2.9	120	25	40
40	10	40	73	3.7	127	24	41
50	10	50	81	4.6	133	24	44
63	10	63	100	5.8	138	25	45



- 法兰接头 I
- 注塑成型
- 对 焊
- PP-H 灰色
- Stub Flange I
- Injection moulded
- Butt
- PP-H gery

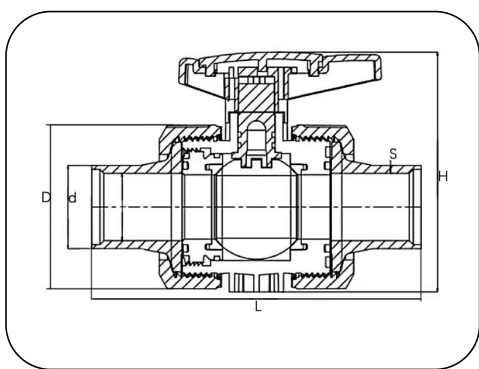
尺寸 Dimension	公称压力 PN	D mm	d3 mm	d4 mm	S mm	L mm	h mm
20	10	20	26	45	1.9	50	6
25	10	25	31	57	2.3	52	9
32	10	32	38	67	2.9	52	9
40	10	40	48	77	3.7	52	11
50	10	50	58	85	4.6	52	11
63	10	63	72	101	5.8	60	14
75	10	75	86	121	6.8	62	17
90	10	90	100	137	8.2	84	17
110	10	110	115	156	10	84	20
140	10	140	145	182	12.7	110	20
160	10	160	175	212	14.6	147	24
225	10	225	235	268	20.5	173	24
250	10	250	285	320	22.7	191	28
280	10	280	291	320	25.4	210	28
315	10	315	355	370	28.6	210	33
400	10	400	410	473	36.3	170	37

# 球阀



- 球阀
- EPDM 密封
- 注塑成型
- 承插连接
- PP-H 灰色
- Ball Valve
- EPDM-sealing
- Injection moulded
- Socket welding
- PP-H gery

尺寸 Dimension	公称压力 PN	d mm	D mm	H mm	h mm	L mm	L1 mm	T mm
20	10	19.2	50	50	22	108	67	72
25	10	24.2	62	60	25	118	72	72
32	10	31.1	69	70	27	132	80	90
40	10	39.0	82	85	31	148	89	108
50	10	48.9	98	99	34	160	93	122
63	10	61.9	122	114	38	182	111	134
75	10	74.3	148	143	41	202	117	220
90	10	89.3	176	158	55	220	135	220

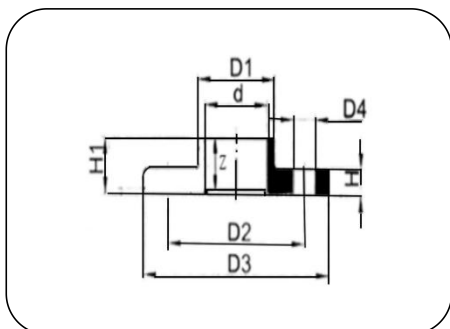


- 球阀
- EPDM 密封
- 注塑成型
- 对焊
- PP-H 灰色
- Ball Valve
- EPDM-sealing
- Injection moulded
- Butt
- PP-H gery

尺寸 Dimension	公称压力 PN	D mm	d mm	H mm	S mm	L mm
20	10	51	20	80	1.9	171
25	10	60	25	100	2.3	177
32	10	69	32	107	2.9	193
40	10	85	40	134	3.7	209
50	10	100	50	145	4.6	221
63	10	124	63	181	5.8	249
75	10	164	75	253	6.8	389

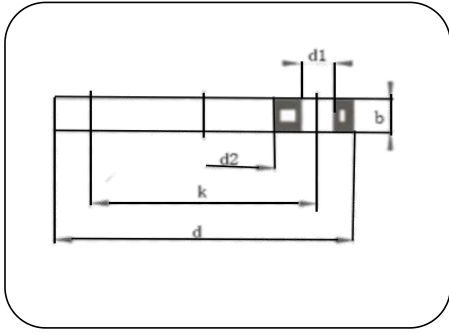


## 法兰系列



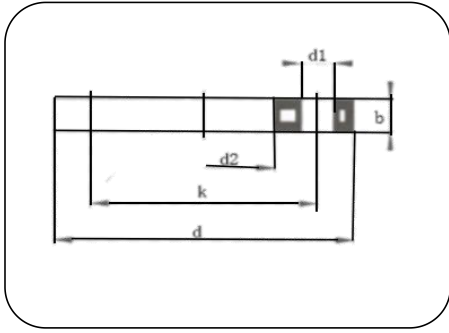
- 整体法兰 I
- 注塑成型
- 承插焊接
- PP-H 灰色
- Integral flangr I
- Injection moulded
- Socket welding
- PP-H gery

尺寸 Dimension	公称压力 PN	d mm	D1 mm	D2 mm	D3 mm	D4 mm	H mm	H1 mm	Z mm
20	10	19.2	29	65	95	14	13	20	16
25	10	24.2	35	75	105	14	17	24	20
32	10	31.1	43	85	115	14	19	23	19
40	10	39.0	52	100	140	18	19	30	25
50	10	48.9	65	110	150	18	21	31	24
63	10	61.9	82	125	165	18	25	38	28
75	10	74.3	92	145	185	18	25	45	31
90	10	89.3	114	160	200	18	28	53	41
110	10	109.4	133	180	220	18	29	60	51



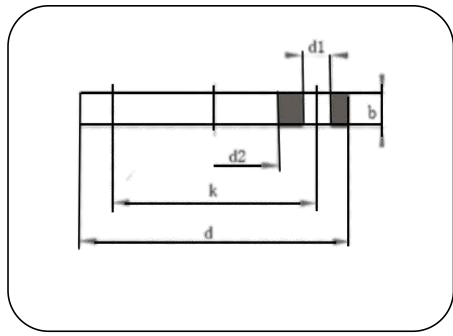
- 法兰环 I
- 钢芯/用于法兰转接头
- 注塑成型+按 PN10/16 钻孔
- 法兰连接
- PP-H 灰色/黑色
- Backing ring I
- Steel insert/for stuib flangg
- Inj. moulded+drilled PN10/16
- Flange connection
- PP-H grey or black

尺寸 Dimension	公称压力 PN	d mm	d1 mm	d2 mm	b mm	k mm
20	10	95	14	28	13	65
25	10	105	14	34	15	75
32	10	115	14	42	17	85
40	10	140	18	51	18	100
50	10	150	18	62	19	110
63	10	165	18	78	19	125
75	10	185	18	92	19	145
90	10	200	18	110	20	160
110	10	220	18	133	20	180
140	10	249	18	167	24	209
160	10	285	22	190	24	241
225	10	340	22	250	24	296
250	10	395	22	277	30	350
280	10	395	22	310	30	350
315	10	445	22	348	32	400
355	10	515	23	388	32	460
400	10	574	26	442	40	515



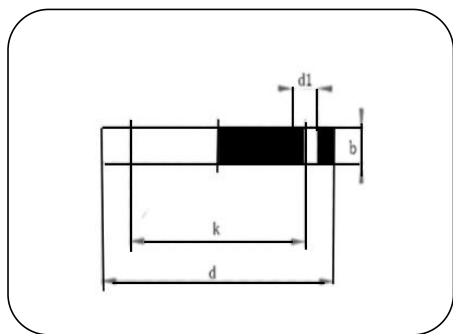
- 法兰环 II
- Backing ring II
- 钢芯/用于法兰转接头
- Steel insert/for stub flange
- 注塑成型+按 PN10/16 钻孔
- Inj. moulded+drilled PN10/16
- 法兰连接
- Flange connection
- PP-H 灰色/黑色
- PP-H grey or black

尺寸 Dimension	公称压力 PN	d mm	d1 mm	d2 mm	b mm	k mm
20	10	95	14	28	11	65
25	10	105	14	34	15	75
32	10	115	14	42	15	85
40	10	140	18	51	15	100
50	10	150	18	62	17	110
63	10	165	18	78	17	125
75	10	185	18	92	17	145
90	10	200	18	110	19	160
110	10	220	18	133	19	180
140	10	249	18	167	23	209



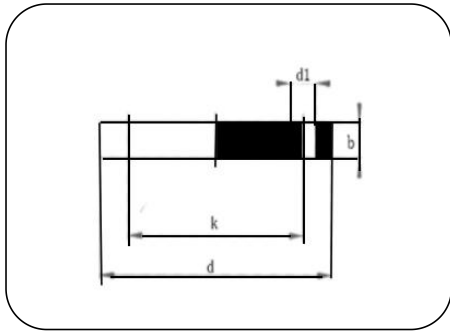
- 全塑法兰环 I
- 用于法兰转接头
- 注塑成型
- 法兰连接
- PP-H 灰色
- AL-Plastic flange I
- For stub flange
- Injection moulded
- Flange connection
- PP-H gery

尺寸 Dimension	公称压力 PN	d mm	d1 mm	d2 mm	k mm	b mm
20	10	95	14	28	65	12
25	10	105	14	34	75	15
32	10	115	14	42	85	18
40	10	140	18	51	100	18
50	10	150	18	62	110	21
63	10	165	18	78	125	25
75	10	185	18	92	145	26
90	10	200	18	110	160	26
110	10	220	18	133	180	27
140	10	249	18	167	209	32
160	10	285	22	190	241	34
225	10	340	22	250	296	34
250	10	395	22	277	350	38
280	10	395	22	310	350	38
315	10	445	22	348	400	40
355	10	515	23	388	400	40
400	10	574	26	442	515	40



- 无钢芯盲法兰 I
- 注塑成型+按 PN10 钻孔
- 法兰连接
- PP-H 灰色
- Backing ring I
- Inj.moulded+drilled PN10
- Flange connection
- PP-H grey or black

尺寸 Dimension	公称压力 PN	d mm	d1 mm	k mm	b mm
20	10	95	14	65	12
25	10	105	14	75	15
32	10	115	14	85	18
40	10	140	18	100	18
50	10	150	18	110	21
63	10	165	18	125	25
75	10	185	18	145	26
90	10	200	18	160	26
110	10	220	18	180	27
140	10	249	18	209	32
160	10	285	22	241	34
225	10	340	22	296	34
250	10	395	22	350	38
280	10	395	22	350	38
315	10	445	22	400	40
355	10	515	23	400	40
400	10	574	26	515	40



- 法兰环（日标） I
- Backing ring (JIS) I
- 钢芯/用于法兰转接头
- Steel insert/for stuib flangg
- 注塑成型+按 PN10 钻孔
- Inj. moulded+drilled PN10
- 法兰连接
- Flange connection
- PP-H 灰色/黑色
- PP-H grey or black

尺寸 Dimension	公称压力 PN	d mm	d1 mm	d2 mm	b mm	k mm
32	10	125	19	42	14	90
50	10	140	19	62	16	105
63	10	159	19	78	16	120
75	10	175	19	92	16	139